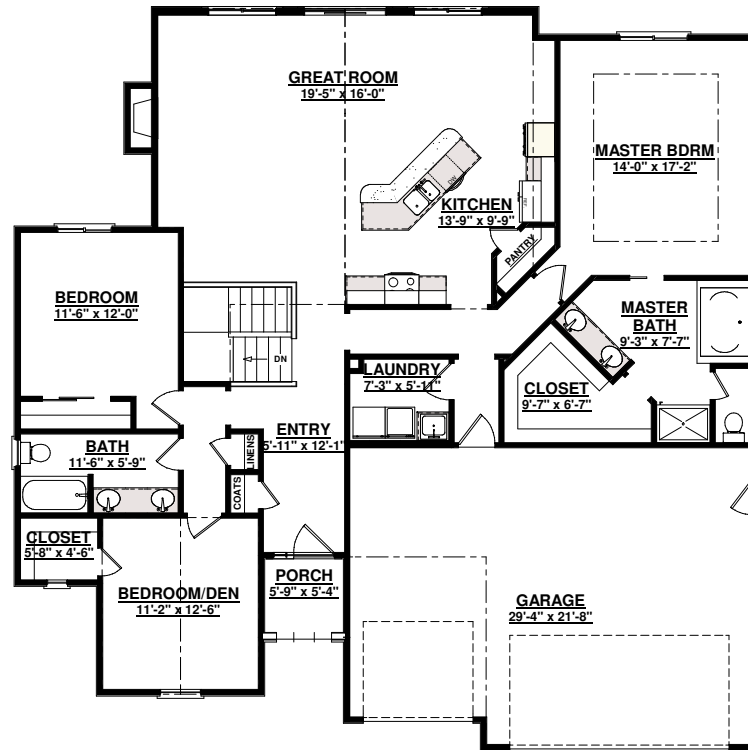


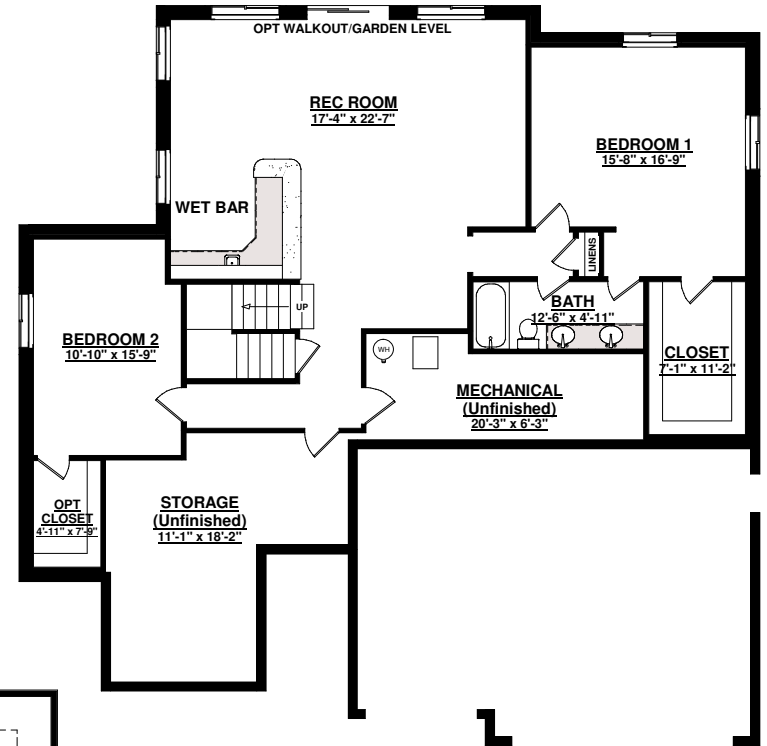


ROOSEVELT

Plan # 1854R



MAIN LEVEL FLOOR PLAN
1854 sq ft



BASEMENT FLOOR PLAN
1866 sq ft

3,720 sq ft total, BASEMENT FINISH STD

FIVE BEDROOM, THREE BATHS w/5 PC MASTER

SPACIOUS GOURMET KITCHEN

STANDARD 3 BAY GARAGE

VAULTED OPEN LIVING AREAS



SAINT AUBYN HOMES

Floor plans shown are not to scale. Plans are subject to change without notice due to code changes and availability of materials. Some features shown are optional. Verify accuracy and revisions with sales personnel prior to purchase.